

ACP Sentry Barrier W Beam System

The **ACP Sentry Barrier W Beam System** is a roadside **MASH TL-3** rated W-beam guardrail system suitable for containing, redirecting and shielding vehicles from roadside obstacles.

MASH is the highest crash testing performance criteria, exceeding the requirements of NCHRP 350 TL-3 and is currently the basis performance criteria in Australia for newly developed systems.



Advantages

- > Designed and Made in Australia
- > MASH TL-2 and TL-3 Tested
- > Semi-flexible roadside barrier
- > No block out and stiffener required
- > Single bolt for rail to post connection
- > Narrower footprint over public systems
- > Familiar C-Post only smaller profile
- > Minimal parts for an easy repair
- > Rail sits higher than post for increased safety and performance
- > 800mm from surface to top of rail allows for future pavement overlays

Specifications

- | | |
|--|-------------|
| > System Width | 200 mm |
| > Height to top of rail | 800 mm |
| > Height to top of post | 790 mm |
| > Post Weight | 13.7 kg |
| > Post Length | 1.64 m |
| > Post spacing | 2.00 m |
| > MASH TL-3 Deflection (1100kg @ 25 degrees) | 1.02 m |
| > MASH TL-3 Deflection (2270kg @ 25 degrees) | 1.59 m |
| > Minimum length of barrier between terminals | 30 m |
| > Maximum slope behind barrier when setback 0mm to batter hinge point* | 3H:1V Slope |
| > Maximum slope behind barrier when setback 200mm to batter hinge point* | 2H:1V Slope |

*Contact ACP for further information and instruction

Manufacturers of Road Safety Barriers | Australian Construction Products Pty Limited

New South Wales
Sydney 02 8708 4400

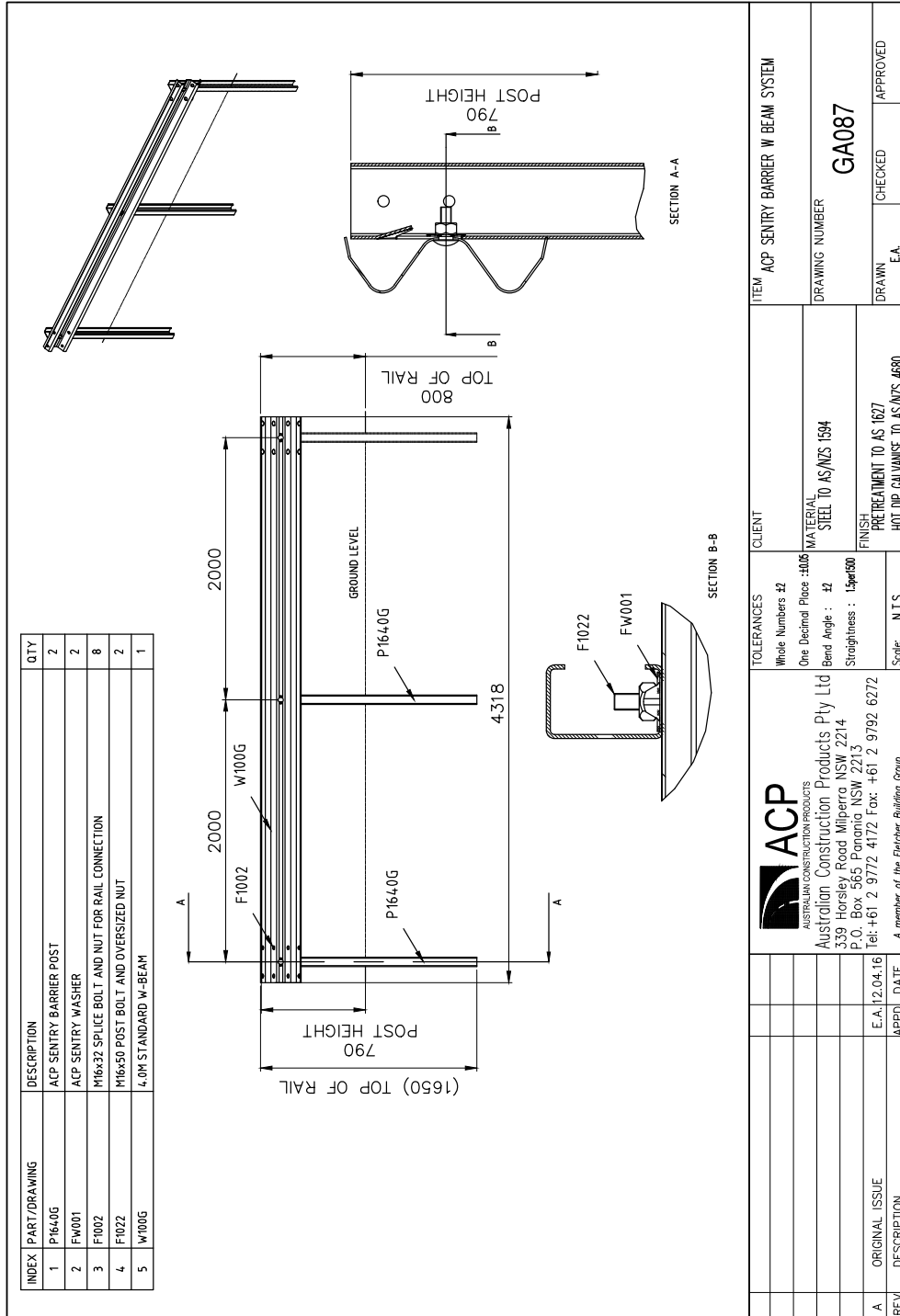
Victoria
Melbourne 03 8773 5301

Queensland
Brisbane 07 3442 6200

Western Australia
Perth 02 8708 4400

www.acprod.com.au

ACP Sentry Barrier W Beam System



Contact ACP for more information on this or other road safety products

Manufacturers of Road Safety Barriers | Australian Construction Products Pty Limited

New South Wales
Sydney 02 8708 4400

Victoria
Melbourne 03 8773 5301

Queensland
Brisbane 07 3442 6200

Western Australia
Perth 02 8708 4400

www.acprod.com.au